

DC&B

Design Construct & Build

A Publication For The Building & Infrastructure Business

ISSUE: Jan/Mar 2018
MICA(P) 10/03/2018



RAW CONCRETE MEETS ELEGANT TIMBER VEIL

BY AAMER ARCHITECTS

Contents

COVER STORY – BUILDING



Page 2-6 ■ Raw & Define by Amer Architects

PEOPLE

Page 7 ■ FAITHFUL + GOULD – Announces New Leadership in South East Asia

INVESTMENT

Page 8-9 ■ Asset Repositioning In Asia

NEWS

Page 10-11 ■ Philips lighting

Page 12-13 ■ New SACS Decommissioning Offering that Automates Cutting

Page 14-15 ■ ThyssenKrupp inaugurates world-class elevator manufacturing site in Pune, supporting fast-paced urban development in India

PRODUCT NEWS

Page 16-17 ■ Illuminating Solar Returns

Page 18-19 ■ New 3D DCIM Software Delivers Savings And Reduces Risk For Data Centres

DC&B

Design Construct & Build
A Publication For The Building & Infrastructure Business

Design Construct & Built (DC&B) is a newly-launched quarterly print publication catering to the building and construction industry in the entire Asia-Pacific.

Our mission is simple: provide a platform to designers, architects, engineers, construction companies, building owners, policy makers and facility managers, for interacting, sharing and learning from each-other. For this, we bring together every three months a selection of news and features relating to the best architecture, design, construction and interiors projects from around the world.

With an editorial team scattered around the region, our readers are assured of reliable, timely and up-to-date information on innovations and state-of-the-art technology in construction, renovation, preservation, landscape design, green buildings and smart homes.

Aside, DC&B also endeavours to connect dots and build a network between customers, industry players and governmental agencies. If you or anyone you know may benefit by being a part of this network, please feel free to contact us. We always welcome new friends!

Corporate Mission

Design, Construct & Build (DC&B) is brought to you by Design Publications. Our trade publication is being distributed within the building industry in Asia and South-east Asia. It is a fundamental means by which professionals communicate their ideas in a fast-moving global arena. Producing the magazine about the construction industry tend to have higher production values because of design-conscious market. DC&B will ensure the accuracy of information at the time printing but the Publisher are unable to accept any liability for errors or omissions that may occur after publishing.

EDITORIAL:

(dcandbeditorial@gmail.com)

Content Editor:
Isaiah Das

Sub-Editor:
Matilda Huang

PRODUCTION:

Senior Designer:
Vasanthi Munnusamy

CIRCULATION:

dcandbcirculation@gmail.com

ADVERTISING:

Director - Sales & Marketing:

Pamela De Silva:
pamie.de.silva@gmail.com

PUBLISHING:

Publisher & MD:
Pamela Das:
pamie.de.silva@gmail.com

Regional Manager:

Annie Chan:
annie230558@gmail.com

PUBLISHED BY:

Design Publications

Blk 423, #05-96, Hougang Avenue 6,
Singapore 530423.

Tel: +65-6386 0585 Mobile: +65 9877 7674

Website: dcandb.wix.com

Company Registration No: 53340701W

Printed in Singapore.

All rights are reserved and no part of this publication may be reproduced in part or full without the written permission of the publisher. Neither can any part be stored in a retrieval situation, or transmitted by electronic, mechanical, photocopying, recording or any other means.



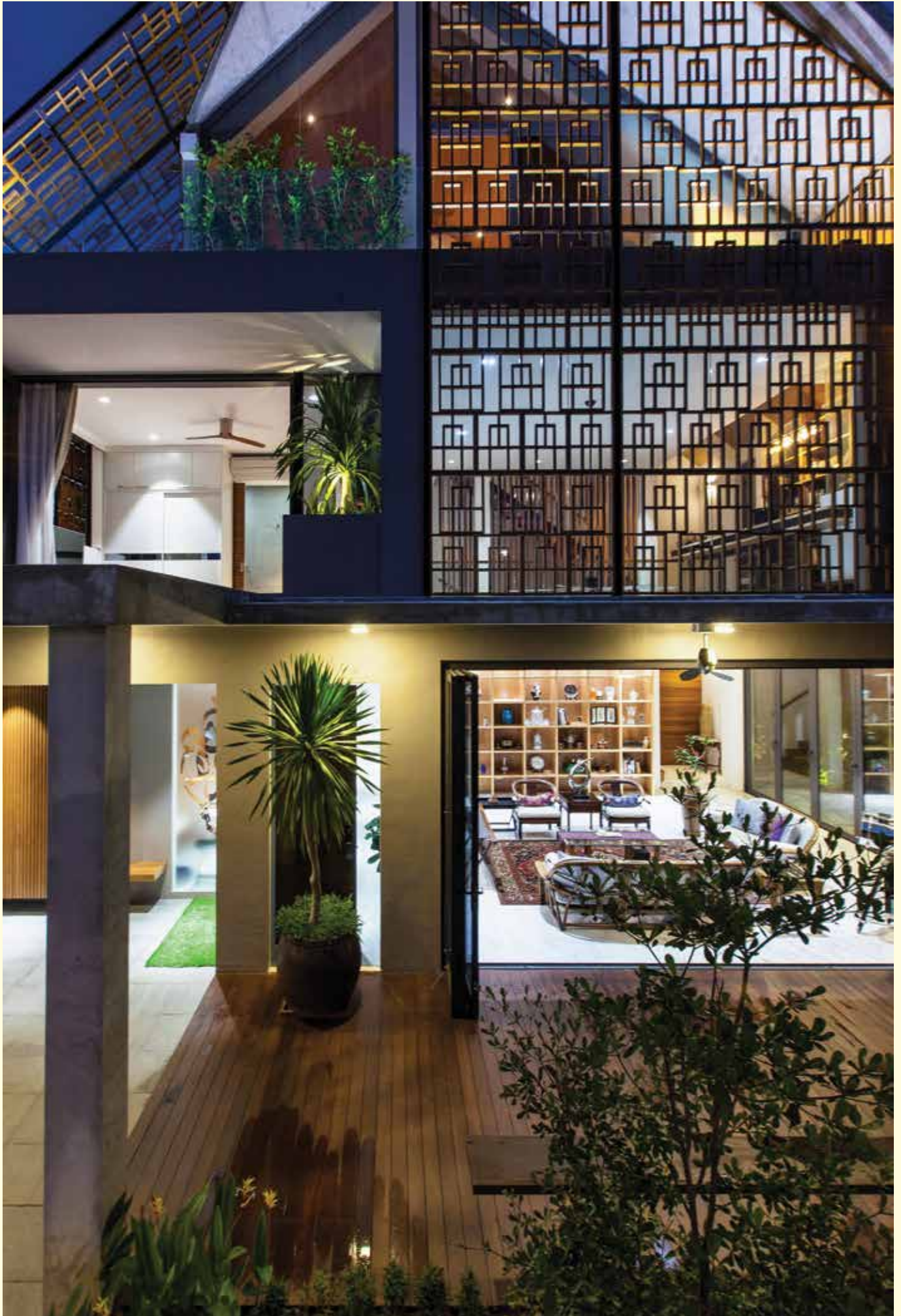
RAW & REFINE

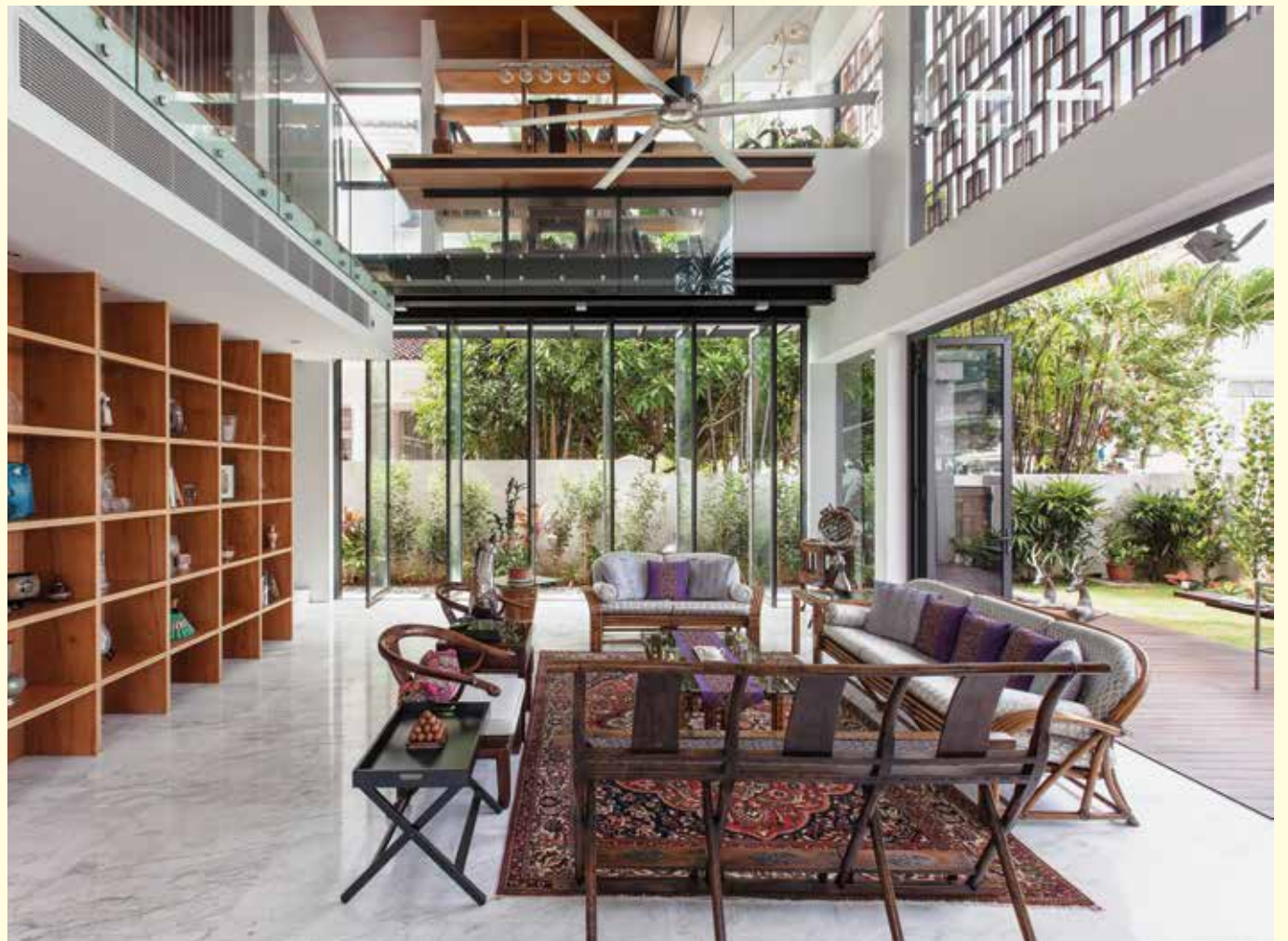


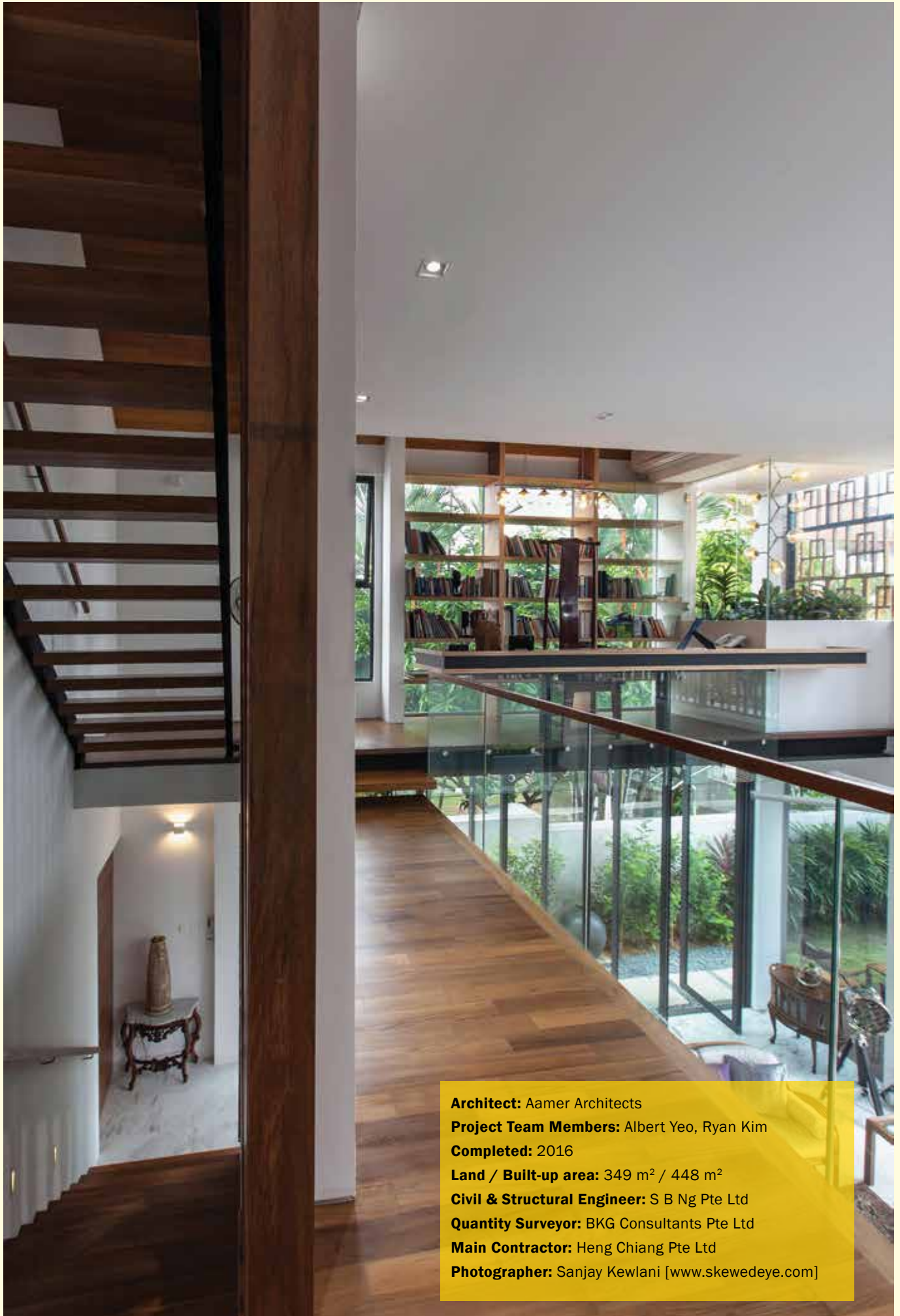
Located in front of a bus-stop at a junction of a minor road and a busy main road, this reconstruction of a small bungalow house is attracting attention from the community for its dynamic form and interesting use of materials. The unique combination of raw off-form concrete and finely crafted solid teak screens from Bali veils and protects the house from its harsh urban environment without compromising on views, natural light and ventilation. Solid boundary walls and landscaping mitigate the traffic noise from the main road while providing an

intriguing visual delight to bus drivers, passengers and passersby. The grand double volume living room, surrounded by a mezzanine study, library and corridors improves connection between occupants and gives the living space a dynamic interactive quality. At ground level, the internal spaces of the house blends easily with the outdoor decks, gardens and swimming pool, which also provides passive cooling to the house. The master bedroom located in the attic enjoys the comfort of deep overhangs, plenty of natural light and long distant views, not typical of such a dense urban site.









Architect: Aamer Architects
Project Team Members: Albert Yeo, Ryan Kim
Completed: 2016
Land / Built-up area: 349 m² / 448 m²
Civil & Structural Engineer: S B Ng Pte Ltd
Quantity Surveyor: BKG Consultants Pte Ltd
Main Contractor: Heng Chiang Pte Ltd
Photographer: Sanjay Kewlani [www.skewedeye.com]